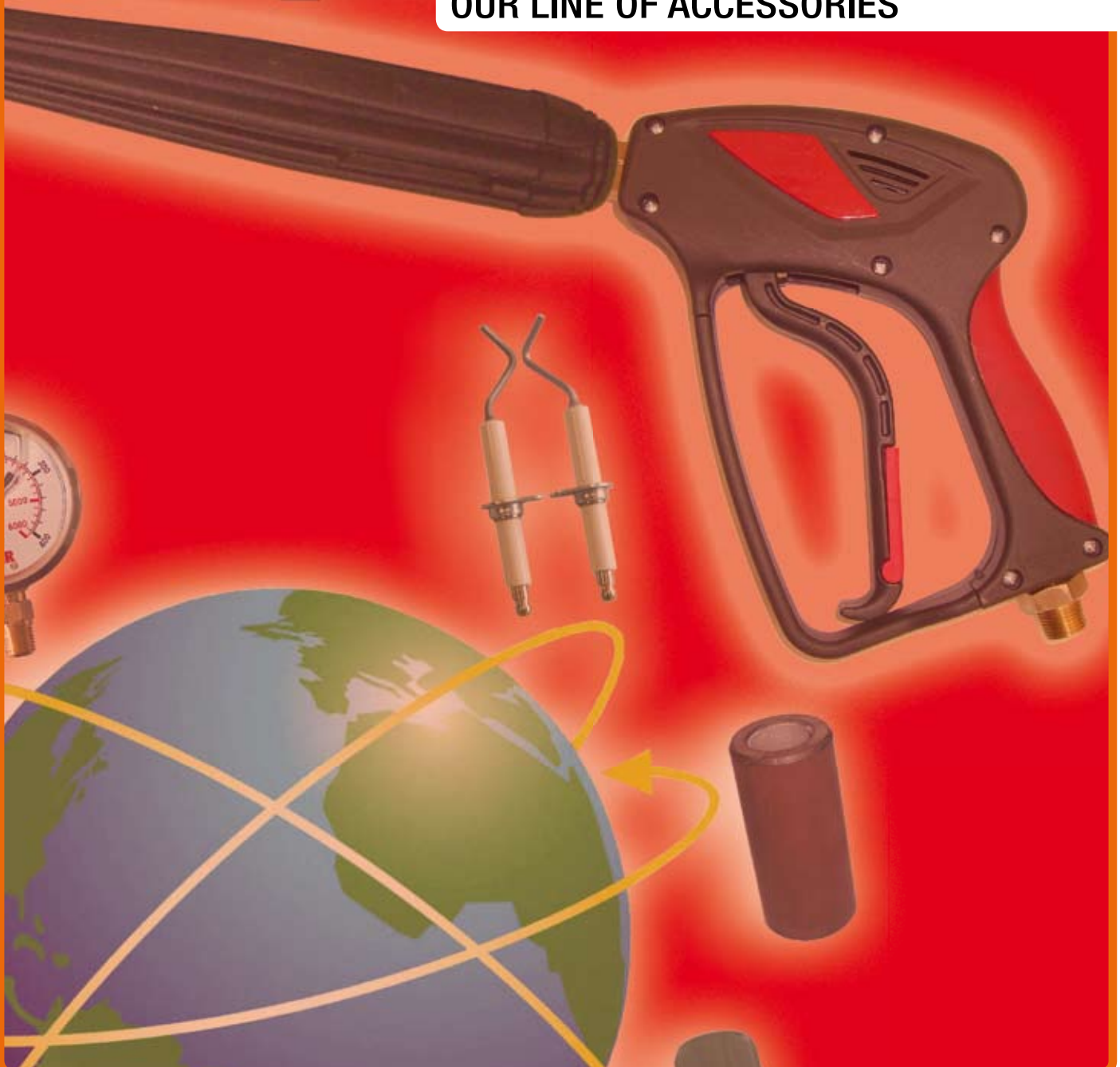


Riparatori®

Club dei
Riparatori®

Club dei
Riparatori®

OUR LINE OF ACCESSORIES





Our line of accessories

Innovative approaches by thinking outside of the box

The way we meet the needs of the customer has enabled us to innovate and to improve on a poor product, so that finally it meets the requirements of the user; more performance, more useful, safer and more comfortable than the products of the past.

The only thing that will remain unchanged with respect to the products of yesterday is its selling price, which will be of great benefit to our distributors and clients, and of great concern to our competitors.



The reason for a new line of high pressure washer accessories

It is well known that through the gun and the lance, the pressure washer can transmit strong vibrations from the pump to the user.

The strength generated by the pressure and force of the water jet that exits the lance through the nozzle, together with the shocks caused by the repeated opening and closing of the trigger of the gun can cause stress that can fatigue the hands, forearms and also the shoulders of the user. In some cases this can result in "tennis elbow".

This is a genuine and serious occupational hazard that affects users of high pressure washers.

Club dei Riparatori of Idrobase, with its new line of accessories transforms what was previously tiring and stressful cleaning into a simple and relaxing job.



CdR® 90 and 990 are professional guns.

The ergonomic grip enables the gun to be held comfortably and securely, and distributes the force applied to the gun by the water jet evenly through the hand. The surface of the gun that is in contact with the palm was specifically designed in *soft rubber* to cushion the vibrations transmitted by the pump.

The inclination of the gun connected to the lance is perfectly balanced, reducing the force imparted by the water jet.



CdR® 90 spray guns

Max: 280 bar-4050 psi, 25 l/min-6.60 USGpm, 150 °C-300 °F

| Code | Inlet | Outlet | Weight | |
|----------|------------|----------|--------|------|
| | | | gr. | oz. |
| CDR.7400 | G 3/8" F | G 1/4" F | 650 | 22.8 |
| CDR.7402 | G 3/8" M | G 1/4" F | 670 | 23.5 |
| CDR.7403 | M 22x1,5 M | G 1/4" F | 685 | 24.0 |



CdR® 990 spray guns

Max: 345 bar-5000 psi, 40 l/min-10.50 USGpm, 150 °C-300 °F

| Code | Inlet | Outlet | Weight | |
|----------|------------|------------|--------|------|
| | | | gr. | oz. |
| CDR.7404 | G 3/8" F | G 1/4" F | 650 | 22.8 |
| CDR.7406 | G 3/8" M | G 1/4" F | 670 | 23.5 |
| CDR.7407 | M 22x1,5 M | G 1/4" F | 670 | 23.5 |
| CDR.7408 | M 22x1,5 M | M 22x1,5 M | 685 | 24.0 |

Nozzles

- Table for the suitable nozzle

Flow rate in l/min-USGpm at the indicated pressure bar-psi

| Pressure | NOZZLE | | | | | | | | | | | | | | | | | | | Flow rate | |
|----------|--------|------|------|------|------|------|------|------|------|------|------|------|------|------|------|------|------|------|------|-----------|-------|
| | 02 | 03 | 035 | 04 | 045 | 05 | 055 | 06 | 065 | 07 | 075 | 08 | 085 | 09 | 10 | 11 | 12 | 13 | 14 | | 15 |
| 50 bar | 3,2 | 4,8 | 5,5 | 6,6 | 7,1 | 8 | 8,7 | 9,6 | 10,4 | 11,2 | 12 | 12,7 | 13,5 | 14,3 | 16 | 17,3 | 18,9 | 20,5 | 22,1 | 23,9 | l/min |
| 725 psi | 0.9 | 1.3 | 1.5 | 1.8 | 1.9 | 2.1 | 2.3 | 2.6 | 2.8 | 3.0 | 3.2 | 3.4 | 3.6 | 3.8 | 4.3 | 4.6 | 5.0 | 5.5 | 5.9 | 6.4 | USGpm |
| 60 bar | 3,5 | 5,3 | 6 | 7,3 | 7,8 | 8,7 | 9,6 | 10,4 | 11,3 | 12,2 | 13,1 | 14 | 14,8 | 15,7 | 17,4 | 19 | 20,8 | 22,5 | 24,2 | 26,1 | l/min |
| 870 psi | 0.9 | 1.4 | 1.6 | 1.9 | 2.1 | 2.3 | 2.6 | 2.8 | 3.0 | 3.3 | 3.5 | 3.7 | 3.9 | 4.2 | 4.6 | 5.1 | 5.5 | 6.0 | 6.5 | 7.0 | USGpm |
| 70 bar | 3,7 | 5,7 | 6,5 | 7,8 | 8,4 | 9,4 | 10,3 | 11,3 | 12,3 | 13,2 | 14,2 | 15,1 | 16 | 17 | 18,9 | 20,5 | 22,4 | 24,3 | 26,1 | 28,3 | l/min |
| 1015 psi | 1 | 1.5 | 1.7 | 2.1 | 2.2 | 2.5 | 2.7 | 3.0 | 3.3 | 3.5 | 3.8 | 4.0 | 4.3 | 4.5 | 5.0 | 5.5 | 6.0 | 6.5 | 7.0 | 7.5 | USGpm |
| 80 bar | 4 | 6,1 | 7 | 8,4 | 9 | 10 | 11,1 | 12,1 | 13,2 | 14,1 | 15,2 | 16,1 | 17,1 | 18 | 20,1 | 22 | 24 | 26 | 28 | 30,2 | l/min |
| 1160 psi | 1.1 | 1.6 | 1.9 | 2.2 | 2.4 | 2.7 | 3.0 | 3.2 | 3.5 | 3.8 | 4.1 | 4.3 | 4.6 | 4.8 | 5.4 | 5.9 | 6.4 | 6.9 | 7.5 | 8.1 | USGpm |
| 90 bar | 4,2 | 6,3 | 7,4 | 8,9 | 9,6 | 10,7 | 11,8 | 12,8 | 14 | 15 | 16,1 | 17,1 | 18,1 | 19,2 | 21,4 | 23,3 | 25,4 | 27,5 | 29,6 | 32,1 | l/min |
| 1305 psi | 1.1 | 1.7 | 2.0 | 2.4 | 2.6 | 2.9 | 3.1 | 3.4 | 3.7 | 4.0 | 4.3 | 4.6 | 4.8 | 5.1 | 5.7 | 6.2 | 6.8 | 7.3 | 7.9 | 8.6 | USGpm |
| 100 bar | 4,5 | 6,8 | 7,8 | 9,4 | 10,2 | 11,3 | 12,4 | 13,6 | 14,7 | 15,8 | 16,9 | 18 | 19,1 | 20,2 | 22,5 | 24,5 | 26,8 | 29 | 31,3 | 33,8 | l/min |
| 1450 psi | 1.2 | 1.8 | 2.1 | 2.5 | 2.7 | 3.1 | 3.3 | 3.6 | 3.9 | 4.2 | 4.5 | 4.8 | 5.1 | 5.4 | 6.0 | 6.5 | 7.1 | 7.7 | 8.3 | 9.0 | USGpm |
| 110 bar | 4,7 | 7,1 | 8,2 | 9,8 | 10,5 | 11,8 | 13 | 14,3 | 15,4 | 16,6 | 17,7 | 18,9 | 20 | 21,2 | 23,6 | 25,7 | 28,1 | 30,4 | 32,8 | 35,3 | l/min |
| 1395 psi | 1.3 | 1.9 | 2.2 | 2.6 | 2.8 | 3.1 | 3.5 | 3.8 | 4.1 | 4.4 | 4.7 | 5.0 | 5,3 | 5,7 | 6,3 | 6,9 | 7,5 | 8,1 | 8,7 | 9,4 | USGpm |
| 120 bar | 4,8 | 7,4 | 8,6 | 10,3 | 10,9 | 12,4 | 13,6 | 14,9 | 16,1 | 17,3 | 18,5 | 19,7 | 20,9 | 22,1 | 24,6 | 26,9 | 29,4 | 31,8 | 34,2 | 36,9 | l/min |
| 1740 psi | 1.3 | 2.0 | 2.3 | 2.7 | 2.9 | 3.3 | 3.6 | 4.0 | 4.3 | 4.6 | 4.9 | 5.3 | 5.6 | 5.9 | 6.6 | 7.2 | 7.8 | 8.5 | 9.1 | 9.8 | USGpm |
| 130 bar | 5 | 7,7 | 8,9 | 10,7 | 11,4 | 12,9 | 14,1 | 15,5 | 16,8 | 18 | 19,3 | 20,5 | 21,8 | 23 | 25,6 | 28 | 30,6 | 33,1 | 35,6 | 38,4 | l/min |
| 1885 psi | 1.3 | 2.1 | 2.4 | 2.9 | 3.0 | 3.4 | 3.8 | 4.1 | 4.5 | 4.8 | 5.1 | 5.5 | 5.8 | 6.1 | 6.8 | 7.5 | 8.2 | 8.8 | 9.5 | 10.2 | USGpm |
| 140 bar | 5,3 | 8 | 9,2 | 11,1 | 11,8 | 13,4 | 14,7 | 16 | 17,4 | 18,7 | 20 | 21,3 | 22,6 | 23,9 | 26,6 | 29,1 | 31,7 | 34,4 | 37 | 39,9 | l/min |
| 2030 psi | 1.4 | 2.1 | 2.5 | 3.0 | 3.1 | 3.6 | 3.9 | 4,3 | 4,6 | 5.0 | 5.3 | 5.7 | 6.0 | 6.4 | 7.1 | 7.8 | 8.5 | 9.2 | 9.9 | 10.6 | USGpm |
| 150 bar | 5,4 | 8,3 | 9,5 | 11,5 | 12,2 | 13,8 | 15,2 | 16,7 | 18 | 19,3 | 20,7 | 22 | 23,4 | 24,7 | 27,6 | 30,1 | 32,8 | 35,6 | 38,3 | 41,3 | l/min |
| 2175 psi | 1.4 | 2.2 | 2.5 | 3.1 | 3.3 | 3.7 | 4.1 | 4.5 | 4.8 | 5.1 | 5.5 | 5.9 | 6.2 | 6.6 | 7.4 | 8.0 | 8.7 | 9.5 | 10.2 | 11.0 | USGpm |
| 170 bar | 6,0 | 8,9 | 10,2 | 11,9 | 13,4 | 14,9 | 16,3 | 17,9 | 19,3 | 20,9 | 22,3 | 23,7 | 25,3 | 24,4 | 30 | 32,6 | 35,2 | 39,1 | 41,7 | 44,3 | l/min |
| 2465 psi | 1.6 | 2.3 | 2.7 | 3.1 | 3.5 | 3.9 | 4.3 | 4.7 | 5.1 | 5.5 | 5,9 | 6,3 | 6,7 | 7,2 | 7,9 | 8,6 | 9,3 | 10,3 | 11,0 | 11,7 | USGpm |
| 180 bar | 6,2 | 9,1 | 10,5 | 12,2 | 13,8 | 15,3 | 16,8 | 18,4 | 19,9 | 21,5 | 22,9 | 24,4 | 26 | 28,2 | 30,9 | 33,5 | 36,2 | 40,2 | 42,9 | 45,6 | l/min |
| 2610 psi | 1.6 | 2.4 | 2.8 | 3.2 | 3.7 | 4.0 | 4.4 | 4.9 | 5.2 | 5.7 | 6.1 | 6.5 | 6.9 | 7.4 | 8.2 | 8.9 | 9.6 | 10.6 | 11.3 | 12.1 | USGpm |
| 200 bar | 6,3 | 9,6 | 11 | 13,3 | 14,1 | 16 | 17,5 | 19,2 | 20,8 | 22,3 | 23,9 | 25,2 | 27 | 28,6 | 31,8 | 34,7 | 37,9 | 41,1 | 44,3 | 47,7 | l/min |
| 2900 psi | 1.7 | 2.6 | 2.9 | 3.5 | 3.8 | 4.3 | 4.7 | 5.1 | 5.5 | 5.9 | 6.4 | 6.7 | 7.2 | 7.6 | 8.5 | 9.3 | 10.1 | 11.0 | 11.8 | 12.7 | USGpm |
| 225 bar | 6,7 | 10,2 | 11,7 | 14,1 | 15 | 16,9 | 18,6 | 20,4 | 22 | 23,7 | 25,3 | 27 | 28,6 | 30,3 | 33,7 | 36,8 | 40,2 | 43,6 | 46,9 | 50,6 | l/min |
| 3263 psi | 1.8 | 2.7 | 3.1 | 3.8 | 4.0 | 4.5 | 5.0 | 5.4 | 5.9 | 6.3 | 6.7 | 7,2 | 7,6 | 8.1 | 9.0 | 9.8 | 10.7 | 11.6 | 12.5 | 13.5 | USGpm |
| 250 bar | 7 | 10,7 | 12,3 | 14,8 | 15,8 | 17,9 | 19,6 | 21,5 | 23,2 | 25 | 26,7 | 28,5 | 30,2 | 31,9 | 35,6 | 38,8 | 42,4 | 45,9 | 49,4 | 53,3 | l/min |
| 3625 psi | 1.9 | 2.9 | 3.3 | 3.9 | 4.2 | 4.8 | 5.2 | 5.7 | 6.2 | 6.7 | 7.1 | 7.6 | 8.1 | 8.5 | 9.5 | 10.3 | 11.3 | 12.2 | 13.2 | 14.2 | USGpm |
| 275 bar | 7,6 | 11,2 | 12,8 | 15 | 16,9 | 18,7 | 20,5 | 22,5 | 24,3 | 26,3 | 28,1 | 29,9 | 31,9 | 34,5 | 37,8 | 41,1 | 44,9 | 49,3 | 52,6 | 55,9 | l/min |
| 3988 psi | 2.0 | 3.0 | 3.4 | 4.0 | 4.5 | 4.9 | 5.4 | 5.9 | 6.4 | 6.9 | 7.4 | 7.9 | 8.4 | 9.1 | 10.0 | 10.9 | 11.7 | 13.0 | 13.9 | 14.8 | USGpm |
| 300 bar | 7,9 | 11,9 | 13,5 | 15,8 | 17,9 | 19,8 | 21,7 | 23,7 | 25,7 | 27,8 | 29,6 | 31,5 | 33,5 | 36,4 | 39,7 | 43,2 | 46,8 | 51,9 | 55,4 | 58,8 | l/min |
| 4350 psi | 2.1 | 3.2 | 3.6 | 4.2 | 4.8 | 5.3 | 5.8 | 6.3 | 6.9 | 7.4 | 7.9 | 8.4 | 8.9 | 9.7 | 10.6 | 11.5 | 12.5 | 13.8 | 14.8 | 15.7 | USGpm |
| 350 bar | 8,5 | 12,8 | 14,6 | 17 | 19,3 | 21,3 | 23,5 | 25,7 | 27,8 | 29,9 | 32 | 34,1 | 36,1 | 39,3 | 43,1 | 46,7 | 50,4 | 56,2 | 60 | 63,5 | l/min |
| 5075 psi | 2.3 | 3.4 | 3.9 | 4.5 | 5.1 | 5.7 | 6.3 | 6.9 | 7.4 | 8.0 | 8.5 | 9.1 | 9.6 | 10.5 | 11.5 | 12.5 | 13.4 | 15.0 | 16,0 | 16.9 | USGpm |
| 400 bar | 9 | 13,6 | 15,6 | 18,2 | 20,7 | 22,9 | 25,1 | 27,5 | 29,7 | 32,1 | 34,2 | 36,3 | 38,7 | 41,8 | 46,2 | 50,1 | 54,1 | 60,2 | 63,9 | 68,1 | l/min |
| 5800 psi | 2.4 | 3.6 | 4.2 | 4.9 | 5.5 | 6.1 | 6.7 | 7.3 | 7.9 | 8.6 | 9.1 | 9.7 | 10.3 | 11.1 | 12.3 | 13.4 | 14.4 | 16.1 | 17.0 | 18.2 | USGpm |
| 450 bar | 9,6 | 14,5 | 16,5 | 19,3 | 21,8 | 24,2 | 26,6 | 29,2 | 31,5 | 34,1 | 36,3 | 38,5 | 41,1 | 44,4 | 49 | 53,1 | 57,3 | 63,6 | 67,9 | 72,1 | l/min |
| 6525 psi | 2,6 | 3,9 | 4,4 | 5,1 | 5,8 | 6,5 | 7,1 | 7,8 | 8,4 | 9,1 | 9,7 | 10,3 | 11,0 | 11,8 | 13,1 | 14,2 | 15,3 | 17,0 | 18,1 | 19,2 | USGpm |
| 500 bar | 10,2 | 15,2 | 17,3 | 20,2 | 22,9 | 25,6 | 28,2 | 30,7 | 33,2 | 36 | 38,2 | 40,8 | 43,5 | 47,1 | 51,5 | 55,9 | 60,4 | 67,1 | 71,6 | 76,1 | l/min |
| 7250 psi | 2,7 | 4,1 | 4,6 | 5,4 | 6,1 | 6,8 | 7,5 | 8,2 | 8,9 | 9,6 | 10,2 | 10,9 | 11,6 | 12,6 | 13,7 | 14,9 | 16,1 | 17,9 | 19,1 | 20,3 | USGpm |

Nozzles

- H.p. nozzles, NPT-M

H.p. nozzles 1/8" NPT-M



Products of the highest quality, chosen and distributed by Club dei Riparatori to ensure the best value for money available today.

gr. 20
oz. 0.7

| Code | Angle | Flow rate |
|--------------|-------|-----------|
| C.18MEG0003 | 0° | 03 |
| C.18MEG00035 | 0° | 035 |
| C.18MEG0004 | 0° | 04 |
| C.18MEG00045 | 0° | 045 |
| C.18MEG0005 | 0° | 05 |
| C.18MEG00055 | 0° | 055 |
| C.18MEG0006 | 0° | 06 |
| C.18MEG0007 | 0° | 07 |
| C.18MEG0008 | 0° | 08 |
| C.18MEG1503 | 15° | 03 |
| C.18MEG15035 | 15° | 035 |
| C.18MEG1504 | 15° | 04 |
| C.18MEG15045 | 15° | 045 |
| C.18MEG1505 | 15° | 05 |
| C.18MEG15055 | 15° | 055 |
| C.18MEG1506 | 15° | 06 |
| C.18MEG1507 | 15° | 07 |
| C.18MEG1508 | 15° | 08 |
| C.18MEG2503 | 25° | 03 |
| C.18MEG25035 | 25° | 035 |
| C.18MEG2504 | 25° | 04 |
| C.18MEG25045 | 25° | 045 |
| C.18MEG2505 | 25° | 05 |
| C.18MEG25055 | 25° | 055 |
| C.18MEG2506 | 25° | 06 |
| C.18MEG2507 | 25° | 07 |
| C.18MEG2508 | 25° | 08 |
| C.18MEG4003 | 40° | 03 |
| C.18MEG40035 | 40° | 035 |
| C.18MEG4004 | 40° | 04 |
| C.18MEG40045 | 40° | 045 |
| C.18MEG4005 | 40° | 05 |
| C.18MEG40055 | 40° | 055 |

H.p. nozzles 1/4" NPT-M



Products of the highest quality, chosen and distributed by Club dei Riparatori to ensure the best value for money available today.

gr. 20
oz. 0.7

| Code | Angle | Flow rate |
|------------|-------|-----------|
| C.MEG0003 | 0° | 03 |
| C.MEG00035 | 0° | 035 |
| C.MEG0004 | 0° | 04 |
| C.MEG00045 | 0° | 045 |
| C.MEG0005 | 0° | 05 |
| C.MEG00055 | 0° | 055 |
| C.MEG0006 | 0° | 06 |
| C.MEG0007 | 0° | 07 |
| C.MEG0008 | 0° | 08 |
| C.MEG1503 | 15° | 03 |
| C.MEG15035 | 15° | 035 |
| C.MEG1504 | 15° | 04 |
| C.MEG15045 | 15° | 045 |
| C.MEG1505 | 15° | 05 |
| C.MEG15055 | 15° | 055 |
| C.MEG1506 | 15° | 06 |
| C.MEG1507 | 15° | 07 |
| C.MEG1508 | 15° | 08 |
| C.MEG2503 | 25° | 03 |
| C.MEG25035 | 25° | 035 |
| C.MEG2504 | 25° | 04 |
| C.MEG25045 | 25° | 045 |
| C.MEG2505 | 25° | 05 |
| C.MEG25055 | 25° | 055 |
| C.MEG2506 | 25° | 06 |
| C.MEG2507 | 25° | 07 |
| C.MEG2508 | 25° | 08 |
| C.MEG4003 | 40° | 03 |
| C.MEG40035 | 40° | 035 |
| C.MEG4004 | 40° | 04 |
| C.MEG40045 | 40° | 045 |
| C.MEG4005 | 40° | 05 |
| C.MEG40055 | 40° | 055 |

Nozzles

- H.p. nozzles, tip fitting Kärcher

H.p. nozzles , tip



Products of the highest quality, chosen and distributed by Club dei Riparatori to ensure the best value for money available today.

gr. 20
oz. 0.7

| Code | Angle | Flow rate |
|--------------|-------|-----------|
| DT.FUH11503 | 15° | 03 |
| DT.FUH115035 | 15° | 035 |
| DT.FUH11504 | 15° | 04 |
| DT.FUH115045 | 15° | 045 |
| DT.FUH11505 | 15° | 05 |
| DT.FUH115055 | 15° | 055 |
| DT.FUH11506 | 15° | 06 |
| DT.FUH115065 | 15° | 065 |
| DT.FUH11507 | 15° | 07 |
| DT.FUH115075 | 15° | 075 |
| DT.FUH11508 | 15° | 08 |
| DT.FUH12503 | 25° | 03 |
| DT.FUH125035 | 25° | 035 |
| DT.FUH12504 | 25° | 04 |
| DT.FUH125045 | 25° | 045 |
| DT.FUH12505 | 25° | 05 |
| DT.FUH125055 | 25° | 055 |
| DT.FUH12506 | 25° | 06 |
| DT.FUH125065 | 25° | 065 |
| DT.FUH12507 | 25° | 07 |
| DT.FUH125075 | 25° | 075 |
| DT.FUH12508 | 25° | 08 |
| DT.FUH140045 | 40° | 045 |
| DT.FUH14005 | 40° | 05 |
| DT.FUH140055 | 40° | 055 |

CDR.7023

Tip retainer,
M 18x1 F



gr. 30
oz. 1.1

CDR.7024

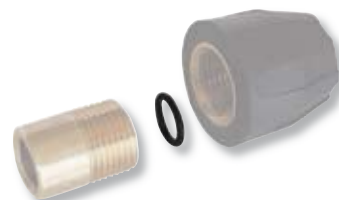
Brass nozzle holder,
G 1/4" F-M 18x1 M



gr. 30
oz. 1.1

ZX.0154

Set O-Ring for brass nozzle holder
(code CDR.7024)



gr. 20
oz. 0.7

quantity
1x100



Nozzles

- Nozzle holder

The spare parts branded "CdR" exclusively refer to products by Club dei Riparatori® by IDROBASE®

ZX.7113

CdR 7 nozzle holder with black protection.
Made of zinced steel, inlet G 1/4" F, outlet 1/4" NPT-F.



gr. 45
oz. 1.6

ZX.7140

CdR 7 nozzle holder with blue protection.
Made of stainless steel, inlet G 1/4" F, outlet 1/4" NPT-F.



gr. 45
oz. 1.6

CDR.0359

Black rubber nozzle protection



gr. 20
oz. 0.7

CDR.7420

Nozzle holder coupling,
inlet G 1/4" F, outlet 1/4" NPT-F.



gr. 40
oz. 1.4

CDR.0364

Nozzle holder coupling,
inlet G 1/8" F, outlet 1/4" NPT-F.



gr. 40
oz. 1.4